

INSTRUMENT APPROACH CHART - ICAO

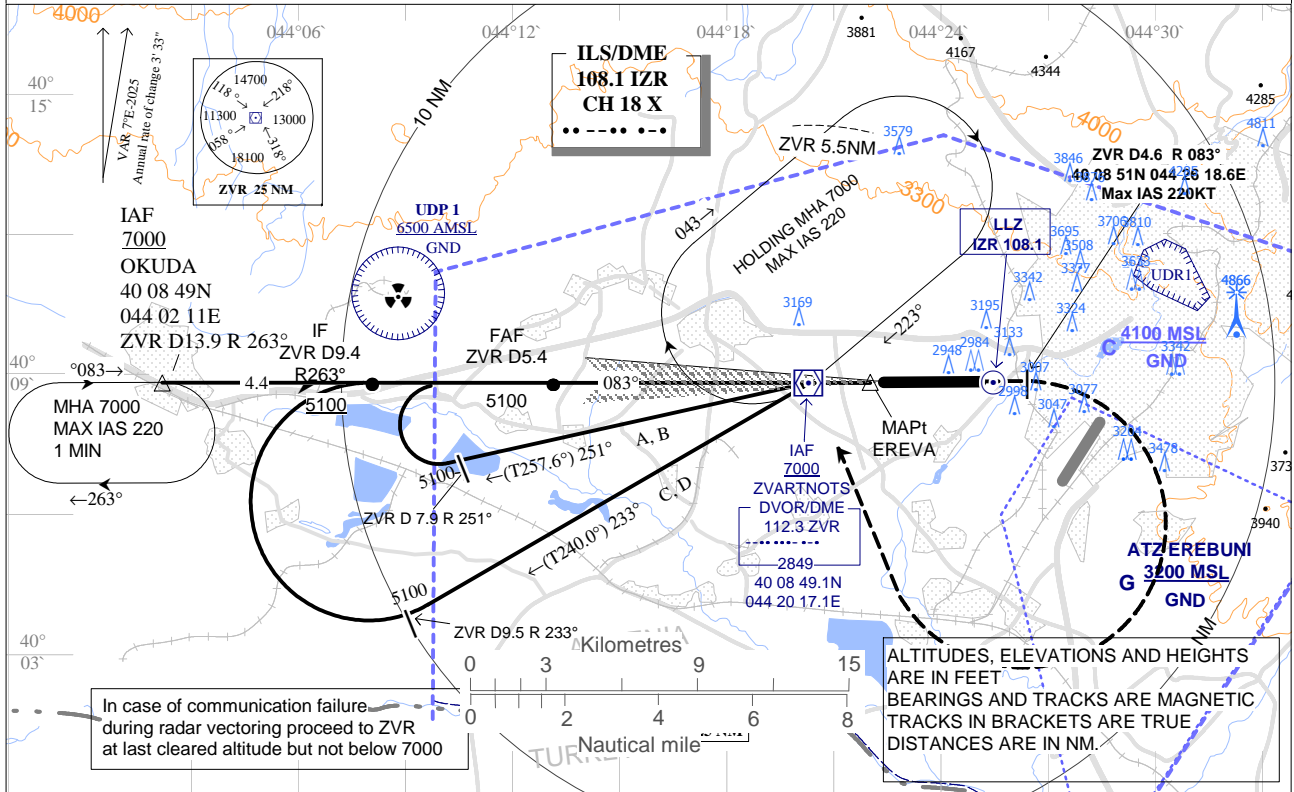
YEREVAN / Zvartnots

TRANSITION LEVEL By ATC
TRANSITION ALTITUDE 11500

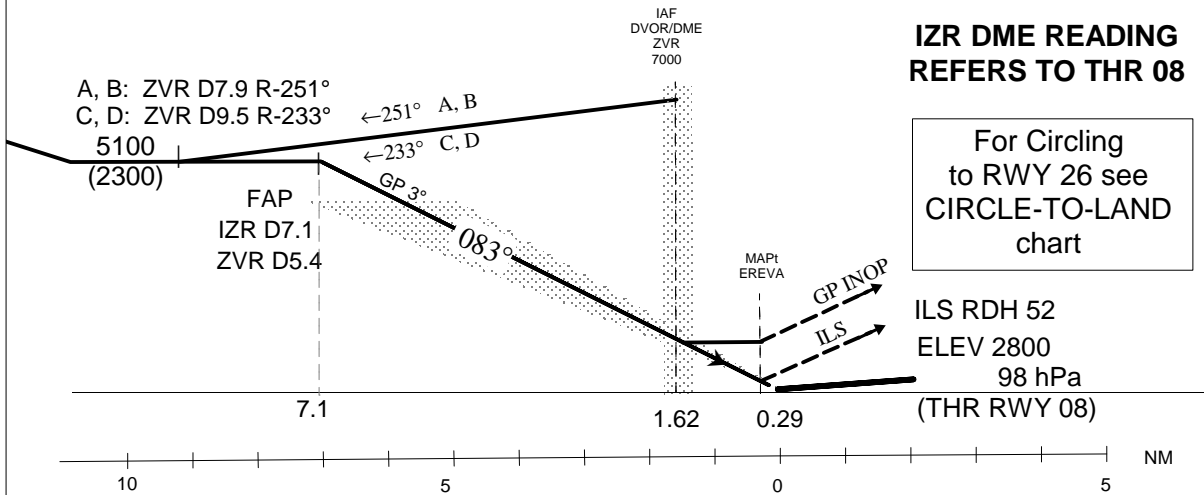
AD ELEV 2838
HEIGHTS RELATED TO
THR RWY 08 ELEV 2800

ATIS 119.5
YEREVAN / APP 126.0
YEREVAN / TWR 128.0
YEREVAN / GND 119.0

ILS/DME
RWY 08



MISSED APCH - Climb straight ahead to ZVR D4.6 then turn right to ZVR climbing to 7000 and hold.



CHANGE: NEW HOLDING OKUDA, MSA corr.

		OCA/H										
Cat of ACFT		A	B	C	D	GP INOP	Final Approach Distance	IZR DME 7	IZR DME 5	IZR DME 3	IZR DME 1	
Straight-in Approach	ILS CAT II	2853 (53)	2863 (63)	2879 (79)	2889 (89)							
	ILS CAT I	2951 (151)	2961 (161)	2971 (171)	2981 (181)							
	GP INOP	3210 (410)					ALT (HGT)	5087 (2287)	4448 (1648)	3810 (1010)	3171 (371)	
Ground Speed		kt	120	140	160	180	200					
Rate of Descent (grad. 5.24 %)		ft/min	640	740	850	960	1060					
MAPt - EREVA or D0.3 NM IZR												